



MAY 22, 2019

CITY OF MIDLAND NEW PROPOSED FIRE STATION NO.5





SOUTH WEST FACADE

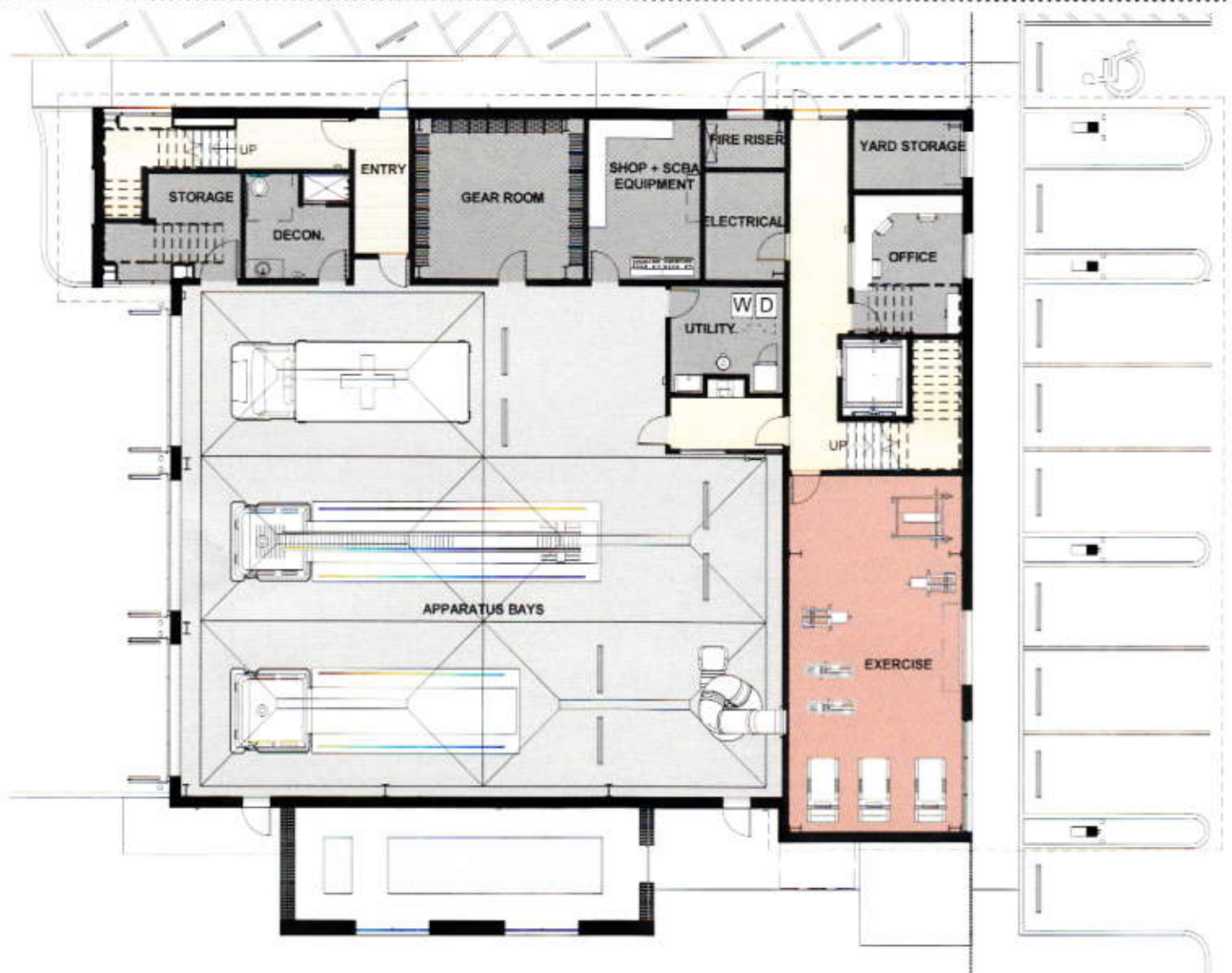


SOUTH EAST FACADE

This state-of-the-art fire station will accommodate three emergency vehicle bays surrounded by support and living spaces, including an exercise room, offices, training apparatus, sleeping areas, a day room, kitchen and living room, as well as other support spaces. Due to the limited building area on site, a portion of the second floor cantilevers over and shades the cars parked below in the secured parking area.

The new facility will replace the existing Station 5 on the same site and will boast new technologies and amenities that will help the firefighters maintain a high level of performance. The materials and color selections will relate to the neighboring area to help create a sense of community.

Level 1 Floor Plan

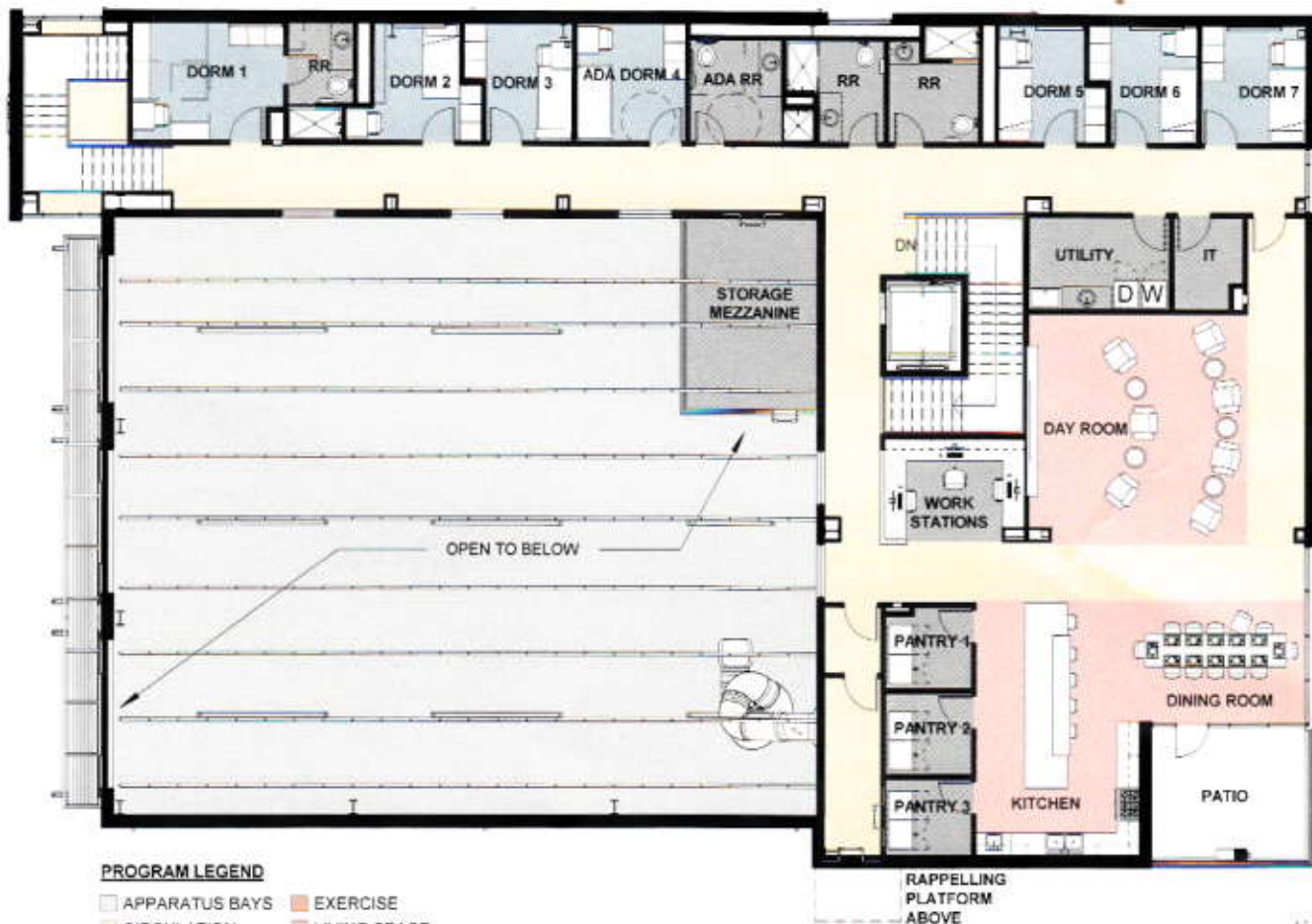




Quick facts

Architect:	Martinez Architects	Parking:	8 public & 9 private
Building Area:	11,480 GSF	Program:	3 bays, 7 dorms, 1 exercise room,...
Levels:	2 stories	Ground breaking:	Beginning 2020

Level 2 Floor Plan



PROGRAM LEGEND

APPARATUS BAYS	EXERCISE
CIRCULATION	LIVING SPACE
DORM	SUPPORT





KITCHEN + DINING ROOM



EXERCISE ROOM

NOTES:

.....

.....

.....

.....

.....

.....

.....

.....

.....

.....

